

THE SUSTAINABLE BOX

BY: THE SUSTAINABLE
FOX

FAQs:



What is "Subscription Waste Removal"?

Subscription Waste Removal is an at home (or work) option for folks who want to recycle more than what's accepted curbside, and want help getting that waste from home to depot.

Ideal for: busy folks/families, folks without vehicle access or limited mobility, anyone who wants to improve at recycling...

What kind of waste can go in *The Sustainable Box*?

Recyclable materials that are not accepted in the BlueBox program, and other materials which should be diverted from landfill (even if their next step isn't technically recycling).

Another way of saying this, is "depot accepted waste".



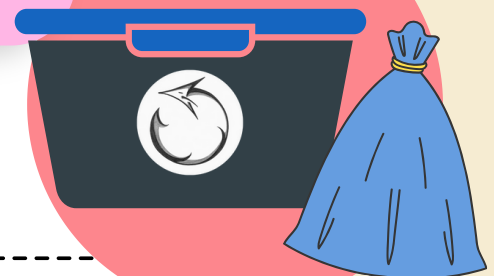
How does it get picked up?

By bike and trailer (most of the time)! We bring your full bin to a collection zone where it is sorted and stored. Once large enough quantities of same type materials are collected, they are brought (by vehicle, most of the time) to the appropriate depots.

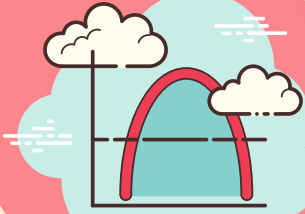
How does pricing work?

There's a \$35 *registration fee* to get you signed up and a box -- then, you *pay what you can* per pick up when it's full (pay what you can: \$35-75, recommended: \$45)!

Wanna throw an extra bag of soft plastic or foam packaging on the side? No problem! Just add \$5 per bag.



FAQs:



"Pay what you can" pricing?

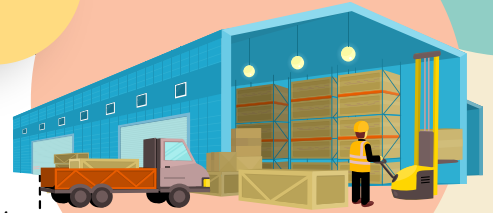
We want this service to be accessible to as many folks as possible!

The reality in any community is that some folks have more "disposable" income than others; pickups \$45 and above should be the norm for folks who consider any income "disposable". If prices still feel like a barrier for your household to participate in the program, please don't hesitate to get in touch directly.

What if I don't know about what kind of waste goes to a depot?

No worries! That's a big part of why we created this service in the first place!

We'll teach you how to get started with your Box, and it will contain a laminated help sheet to refer back to if you're stuck.



What if I want to learn even more than that?

The Sustainable Fox offers Box reports: includes feedback to continue growing your waste reduction skills and your waste data (for an additional \$25/pickup).

For more in depth learning, ask about our coaching options!

What if I fill the Box wrong?

This program does not expect perfection from your recycling abilities! Report purchased or not, we will let you know if you are incorrectly adding materials to the Box, and what they are.

We do, however, expect you to fill the Box respectfully: dirty, unsafe, or fully unsorted Boxes will result in additional management fees.

